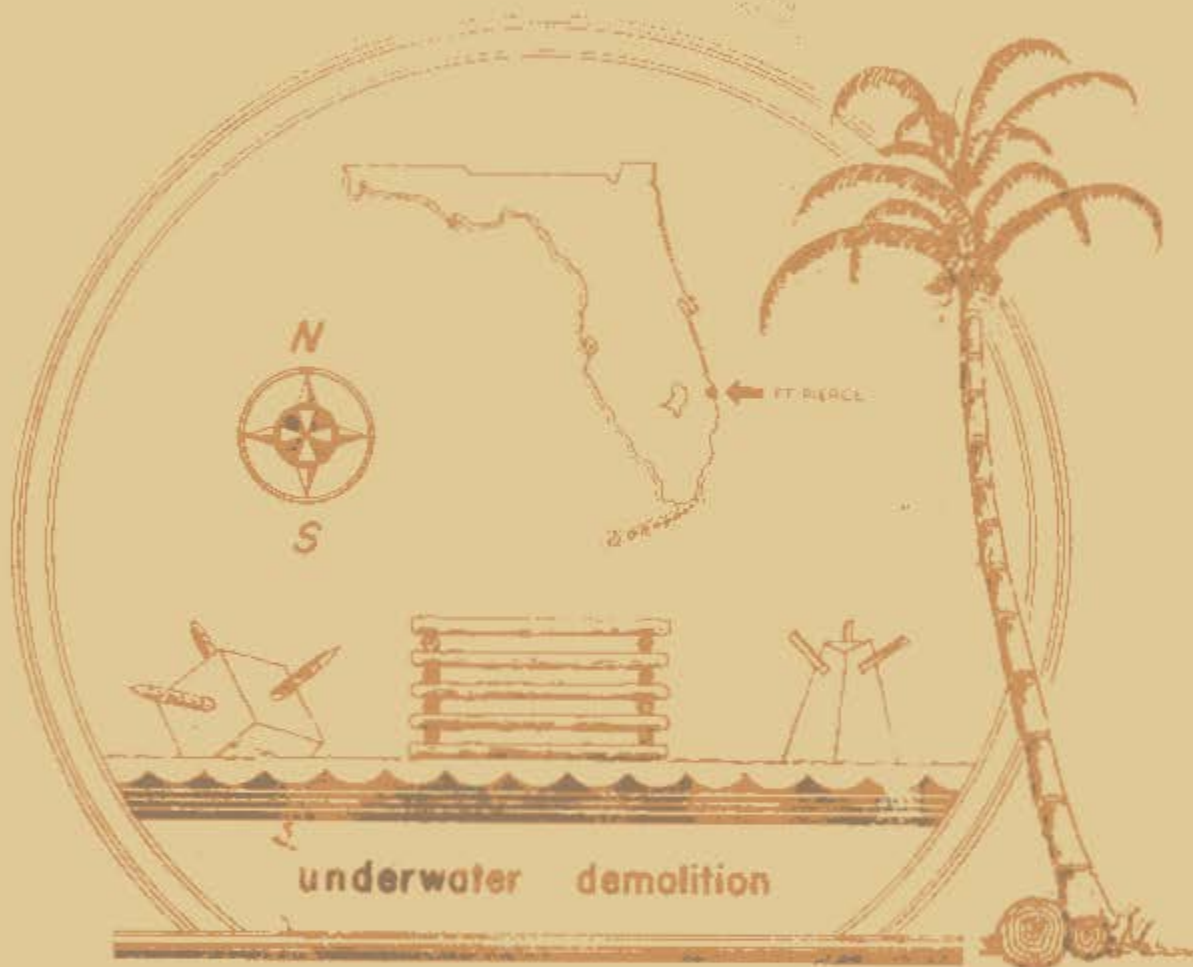


CEC

WORLDWIDE



YEARBOOK

CEC COMPANY

10

IOII-DET.

"SEABEES"



**UNITED STATES
AMPHIBIOUS
TRAINING BASE**

ft. Pierce, fla.





BASE ADM. BLD'G.

A WORD OF APPRECIATION



The staff wishes to express its appreciation to all those persons who helped make this book possible.

We are especially grateful to "JANET" who printed our book.

STAFF

LT. COMDR. POWELL	PUBLISHER
LT. (J.G.) BAFFES	EDITOR
M. ZIVODER CM $\frac{1}{2}$	ART



INTRODUCTION:

Every war brings new inventions and secret weapons; one of the first developed in this war was the Seabees and their Bulldozers. Personnel for the Construction Battalions was recruited from the ranks of America's Construction Industry, men up to fifty years old with years of construction experience behind them enlisted and were furnished with the finest machinery that the world has ever known. These men were given a short, intensive course of military training under the direction, in most cases, of the Marines.

Shortly after war was declared, the Seabees scattered all over the world building camps, docks, navy yards, landing strips, submarine bases, tank farms, and all the myriad of facilities that it takes to carry on a modern war. The speed with which these assignments were completed astounded the enemy, and even surpassed the highest expectations of many of our own high military authorities. In many cases this work was carried on under shell fire and bombing, and always when the terrain was extremely difficult.

The lowly "C.B." or confused "B's" as we were termed at boot camp now became the talk of the armed forces. The Motto of "Can Do" and "Know How" rang around the world, and the Seabee emblem that at first was hesitantly worn now became a proud emblem to display.

This detachment of C. B. 1011, second section, was formed from those Seabees who had been in all corners of the world. Men from fifty-seven different units were represented here. At first there were many longing for their old buddies and many remarks about "we didn't do it that way in our outfit", but soon their small dissatisfactions passed away and we became a well knit unit with a spirit of loyalty to "1011" which has made a good name for us on this base. I, as your Officer-in-Charge, wish to express my appreciation for the fine spirit of cooperation that has made my tour of duty here a happy one, and one in which I take great pride.

One of the proudest moments in my life was when a U. S. Army Colonel at a review said over the Public Address system, "That is the way to march, fellows, Chest Out, Heads Up!" If I were a Seabee, I would do the same thing.

The job has been well done! Carry On!



Lieut. Comdr. E. N. POWELL
Officer-in-Charge



LT. (Jg) P.L. BAFFES



LT. (Jg) F.M. SCHNURR



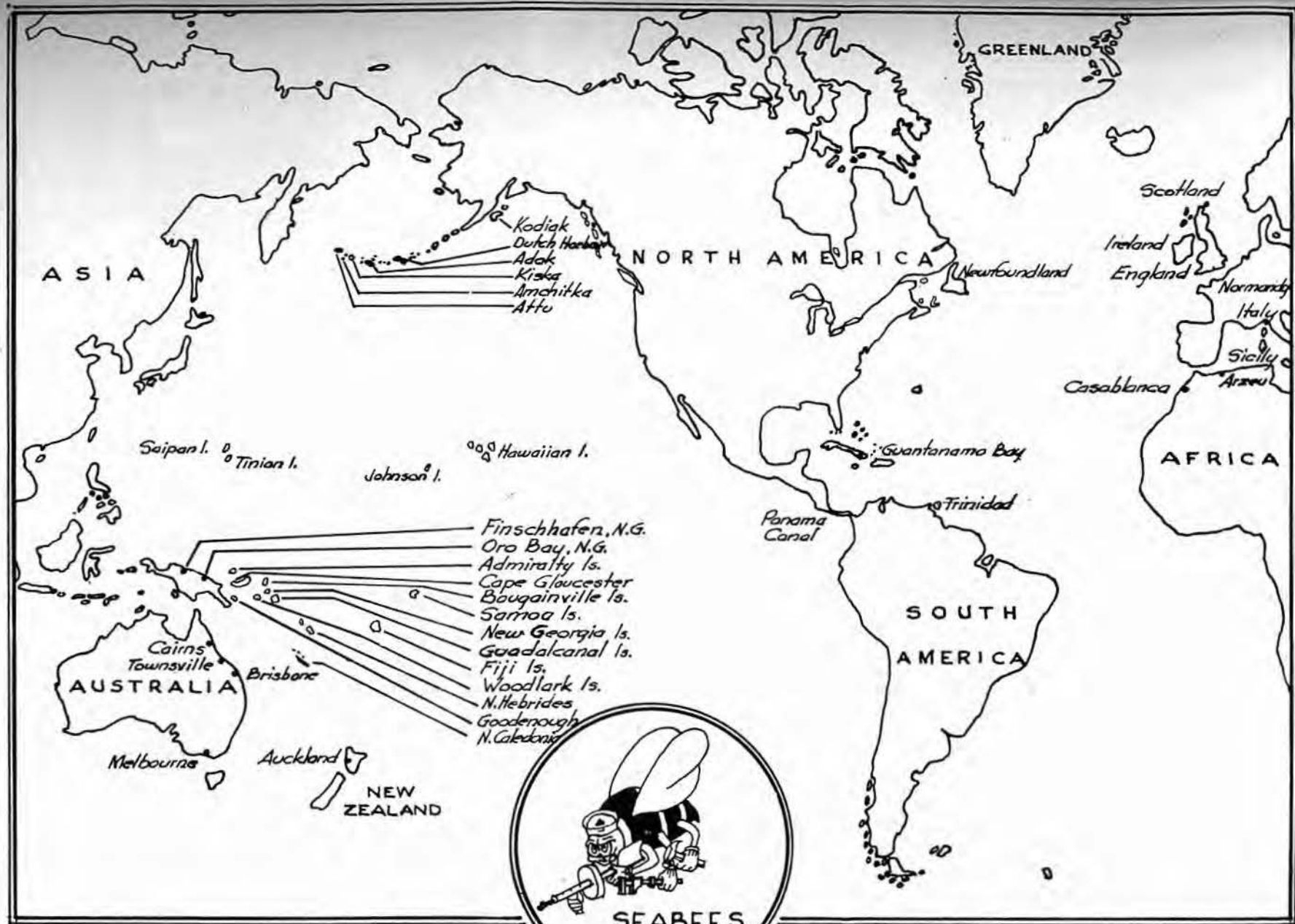
LT. CMDR. E.N. POWELL O-IN-C.



C.W.O. L.J. MURRAY



W.O. A.E. DELL



SEABEE veterans of 1011 Detachment
 on map, and also participated in many

helped build bases at points indicated •
 major invasions.

Our Camp





" ENTRANCE TO "
"OUR CAMP."

SUPPLY

Nuts and bolts...small stores...rakes and shovels...Coca-Cola. "Did my laundry come in?"..... "Mail a package for me." Tractor parts..."Get me some shrimp for bait." "Mr.Dell said to fix me up with a pair of shoes." That's a small part of the stock, and a very small part of the requests which the Supply Department takes care of in the course of a day.

When the present C.B.Detachment #1011 replaced the old unit, Addie, Amorella, Alex and Minschall were installed in the Supply Warehouse as the Board of Directors. They immediately went to work with brooms and swabs...scrapers and paint brushes and cleaned house. What was once a building full of unopened crates and boxes, soon became a model hardware shop.

Minschall was the first one to leave, being transferred to the west coast for further duty overseas. Amorella then assumed the responsibility of driving the Supply truck, for which he received the Safe Driving award given by the base.

Then came V-J day and the point plan...Addie and Amorella became Civilians first class. This left Alex of the original quartet. Danny Lloyd and Fred Cotney were then installed as a new Board of Directors, both of them doing a swell job.

After working hours, the warehouse became an unofficial club-house in which card games, darts and fish fries were held with Alex serving as host. Most of the men who dined (but not wine) there, link the name of Alex, with that of Oscar of the Waldorf, and Mike of the Greasy Spoon. The Filet of Snapper, and the light golden toasted cheese sandwiches were a connoisseurs delight.

The Supply Department under the able supervision of Mr.Dell, has functioned like a well oiled machine. It has always been a source of satisfaction to the men working in the warehouse to be able to take care of any request asked of them.

Arnold E. Dell

Arnold E. Dell, WO
Supply Officer



ADMINISTRATION BUILDING
CB-1011



WAREHOUSE ROW.



SCUTTLEBUTT.



MAIL CALL



LAUNDRY



BARBER SHOP

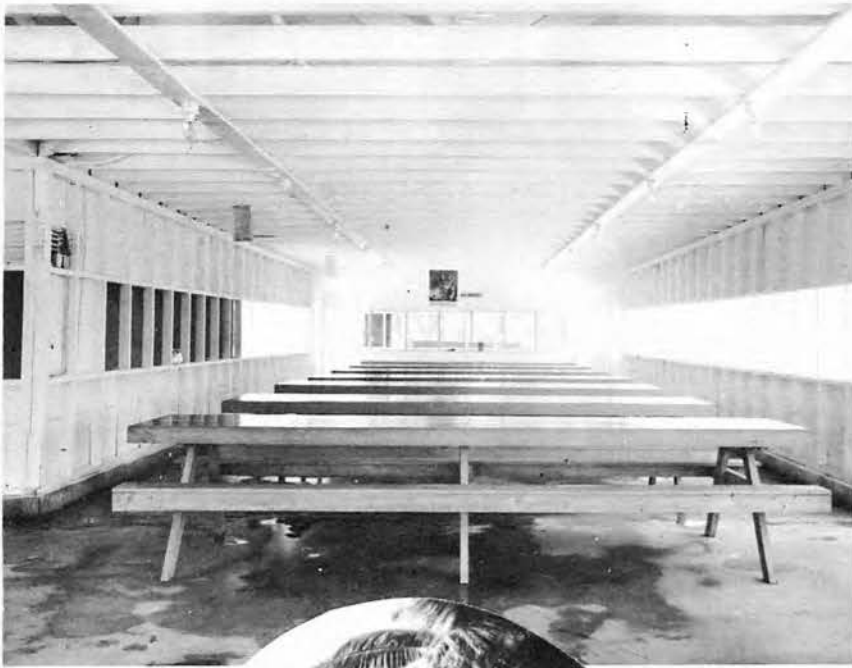


OFFICE FORCE



COMPANY STREET

CHOW HALL



ADM.



BLDG.



CAMP UNDER CONSTRUCTION



SUPPLY CREW



GARAGE CREW



NEW GARAGE



PET DEP'T. (?)

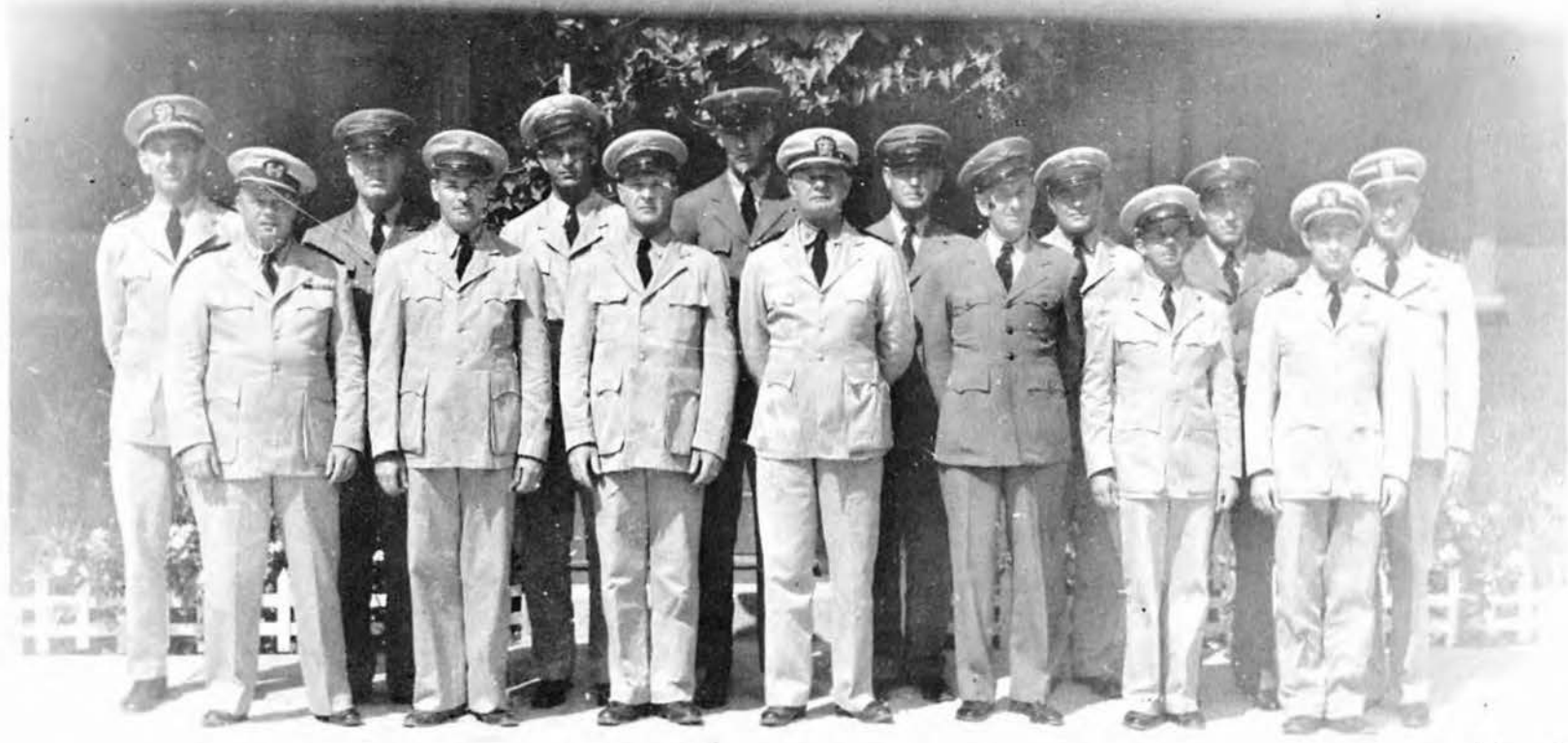




**EASTER
SUNRISE
SERVICES**





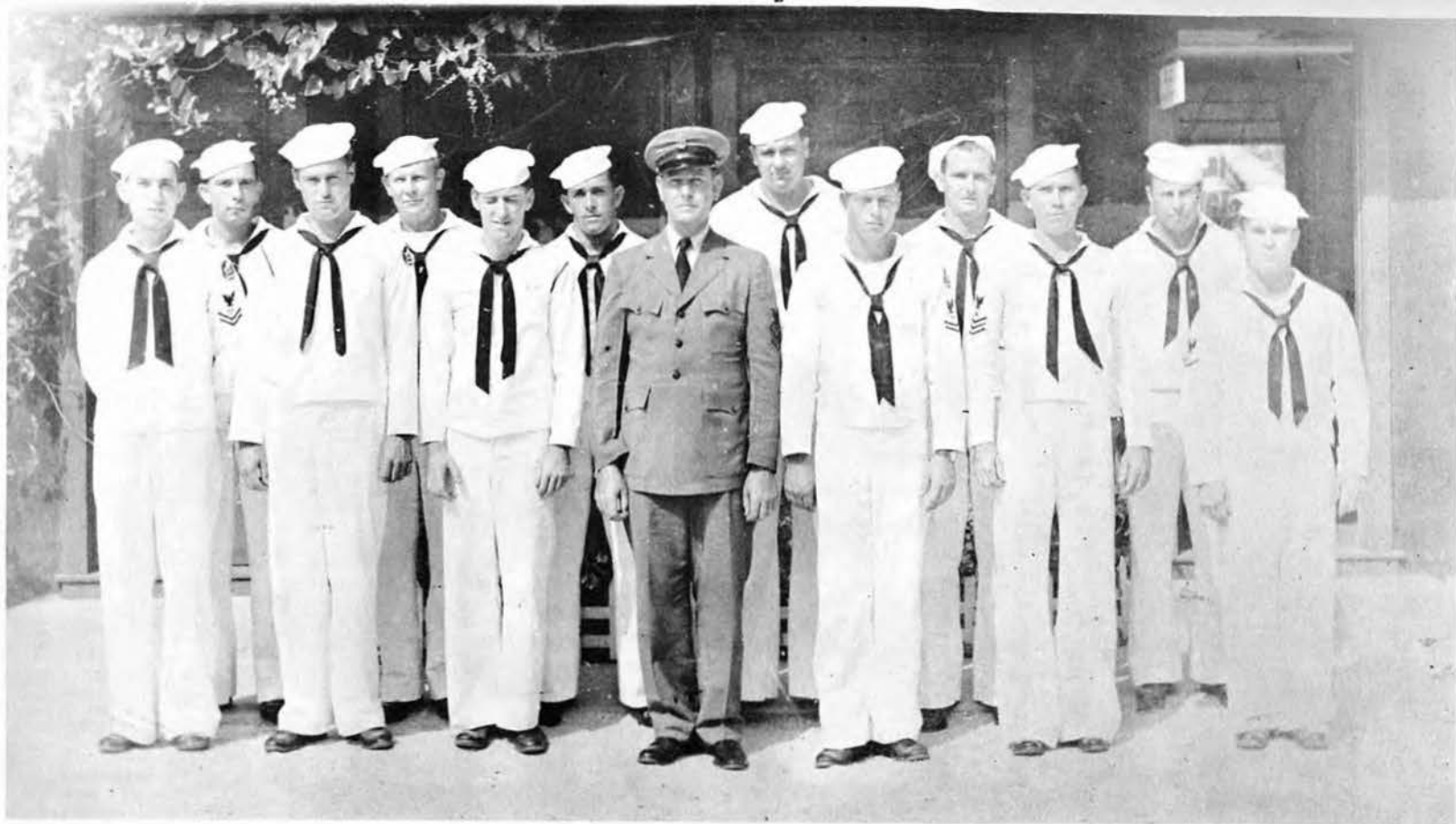


L to R.

Lt. (J.G.) P. L. Baffes, W/O A. E. Dell, Ch. V. O. Green, Ch. A. C. Smith, Ch. P. A. Asenjo, Ch. F. H. Anderson, Ch. O. H. Liebert, Lt. Comdr. Oin C E. N. Powell, Ch. C. B. Ingram, Ch. G. E. Fleming, Ch. J. M. Cleaver, Ch. W. L. Cadigan, Ch. V. F. Wagner, Lt. (J.G.) F. M. Schnurr, Ch. W/O L. J. Murray.

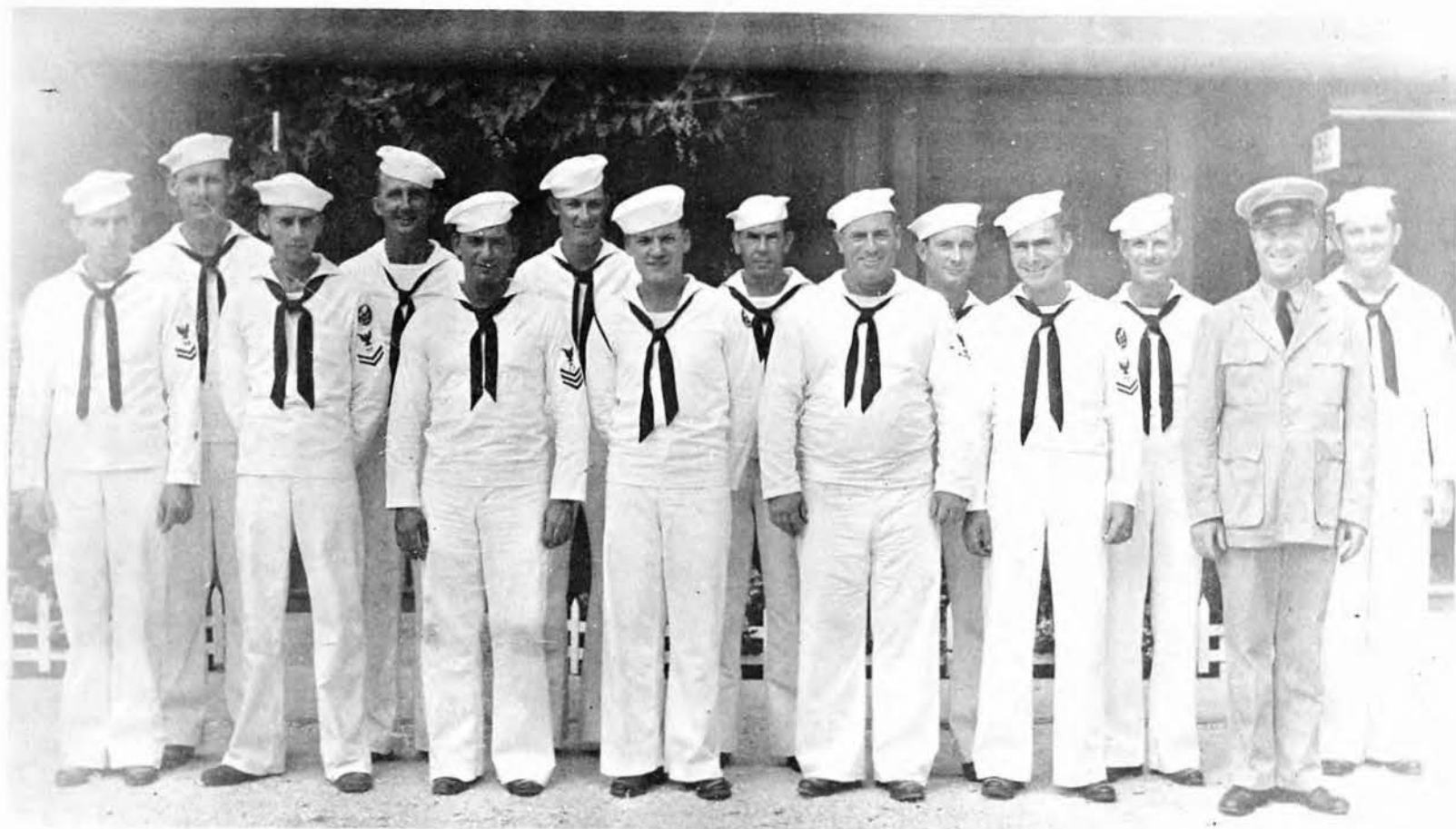


*L to R. standing. A.E. Dell, F.D. Cleaver, J.F. Kelly, E.L. Prock, L.R. Sadrakula, R. T. Caldwell, L.W. Arthur, W.R. Chesser, F.J. Smolik, C. Houseman, S.J. Munny, F.E. Banker, J.W. Line, W.W. Keene, V.O. Green, L. J. Murray,
Front row L to R. L.E. Peterson, R.D. Poore, O.H. Camplejohn, M.J. Convey, J.T. Mannion, C.O. Bylor, D.E. Shove, A.R. Hussey.*



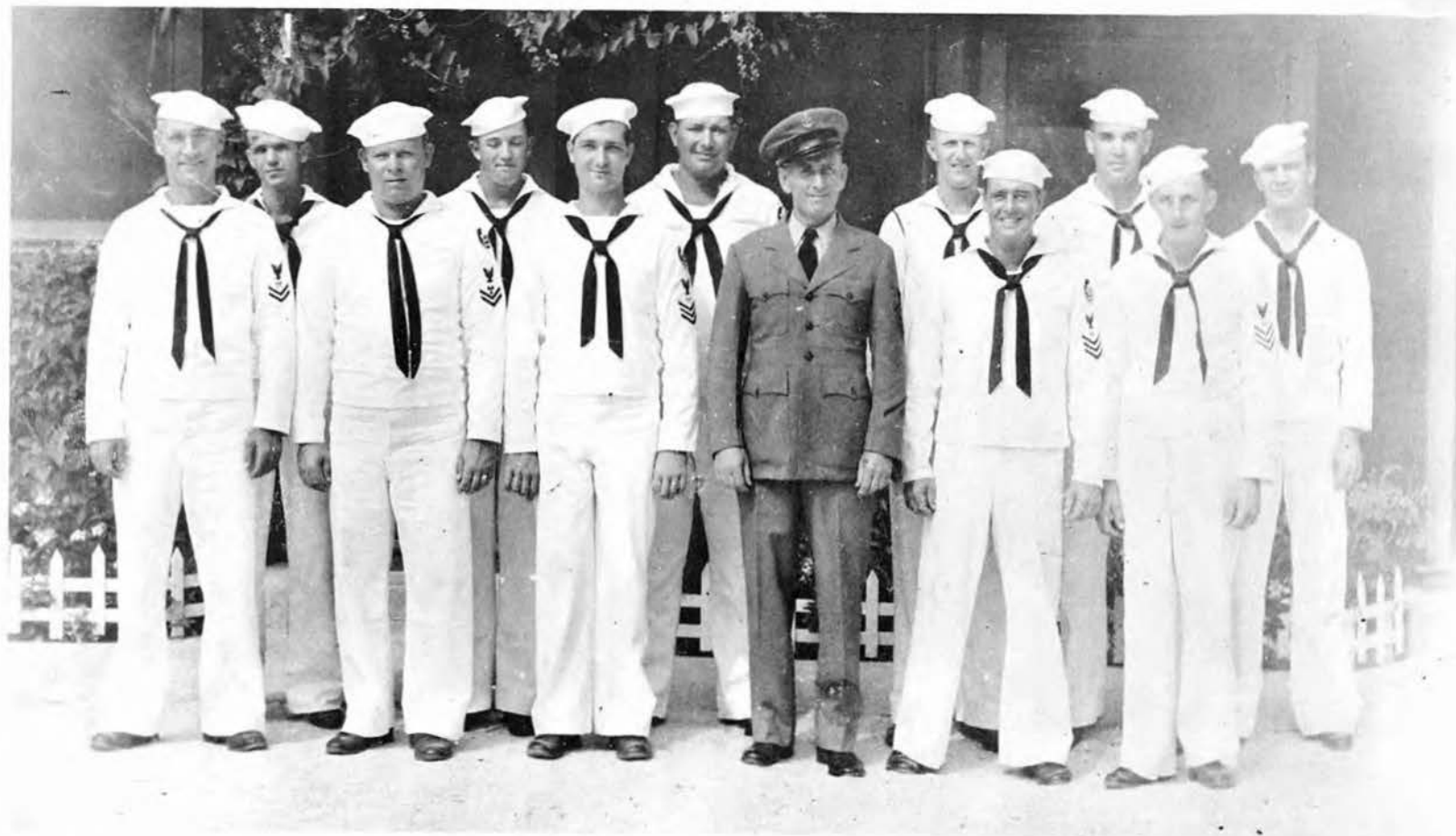
L to R.

*J.E. Quackenbush, J.T. Roberts, P. Stotts, C.G. Cline, F.A. Kennedy, J.W. Wehren,
C.B. Ingram, J.N. Peters, C.R. Parsons, F.W. McCundy, J.R. Waters, M.W. Hughes,
F. Rosano.*



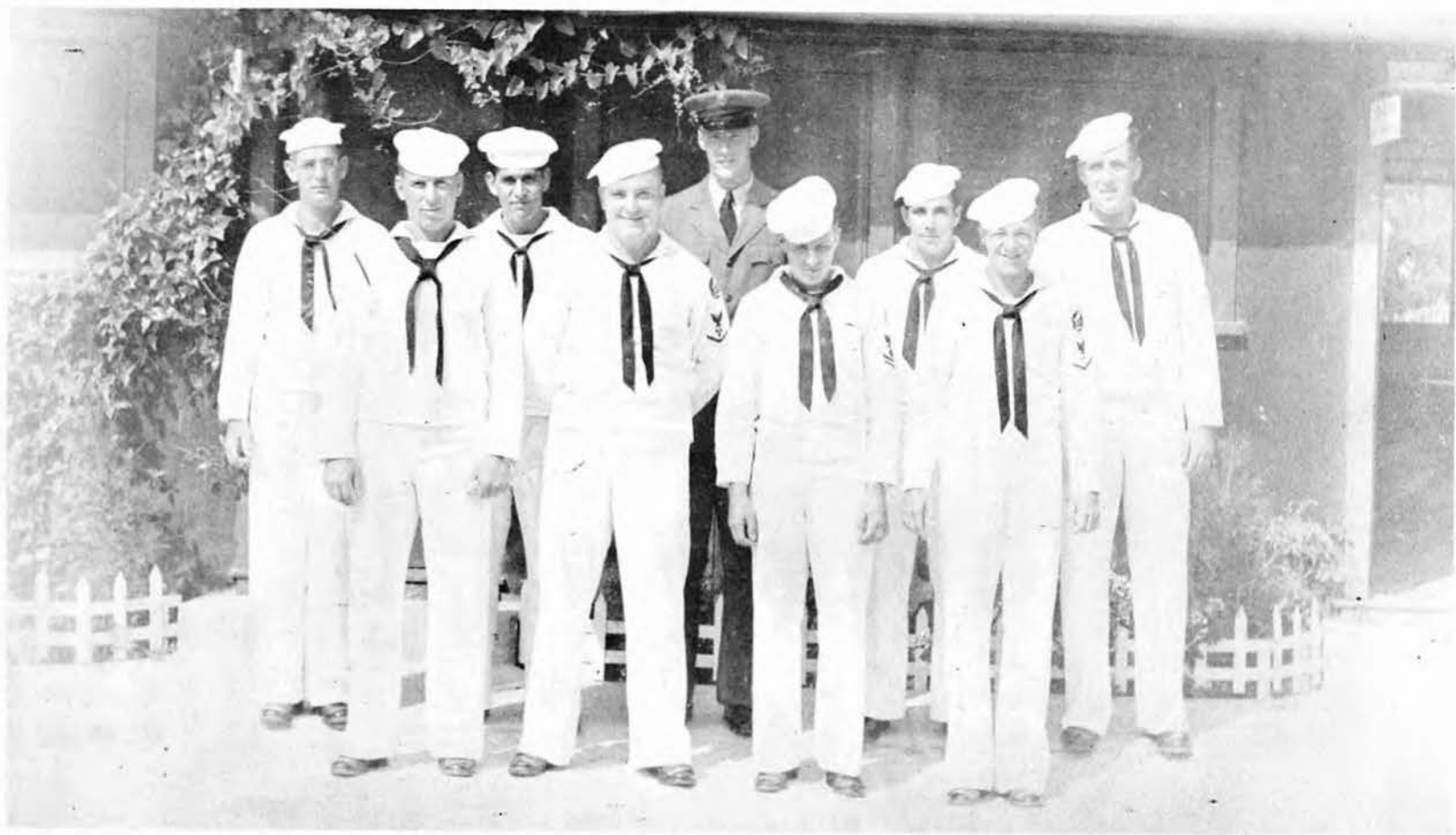
L to R.

*H. N. McKenna, W. C. Hageman, L. Walker, E. A. Kelly, G. Georgacopoulos, H. R. Loenwald,
E. J. Palmisano, C. C. Harrison, F. F. Landis, H. V. McEarter, C. C. Bradshaw,
W. N. Huron, F. H. Anderson, L. L. Holt.*



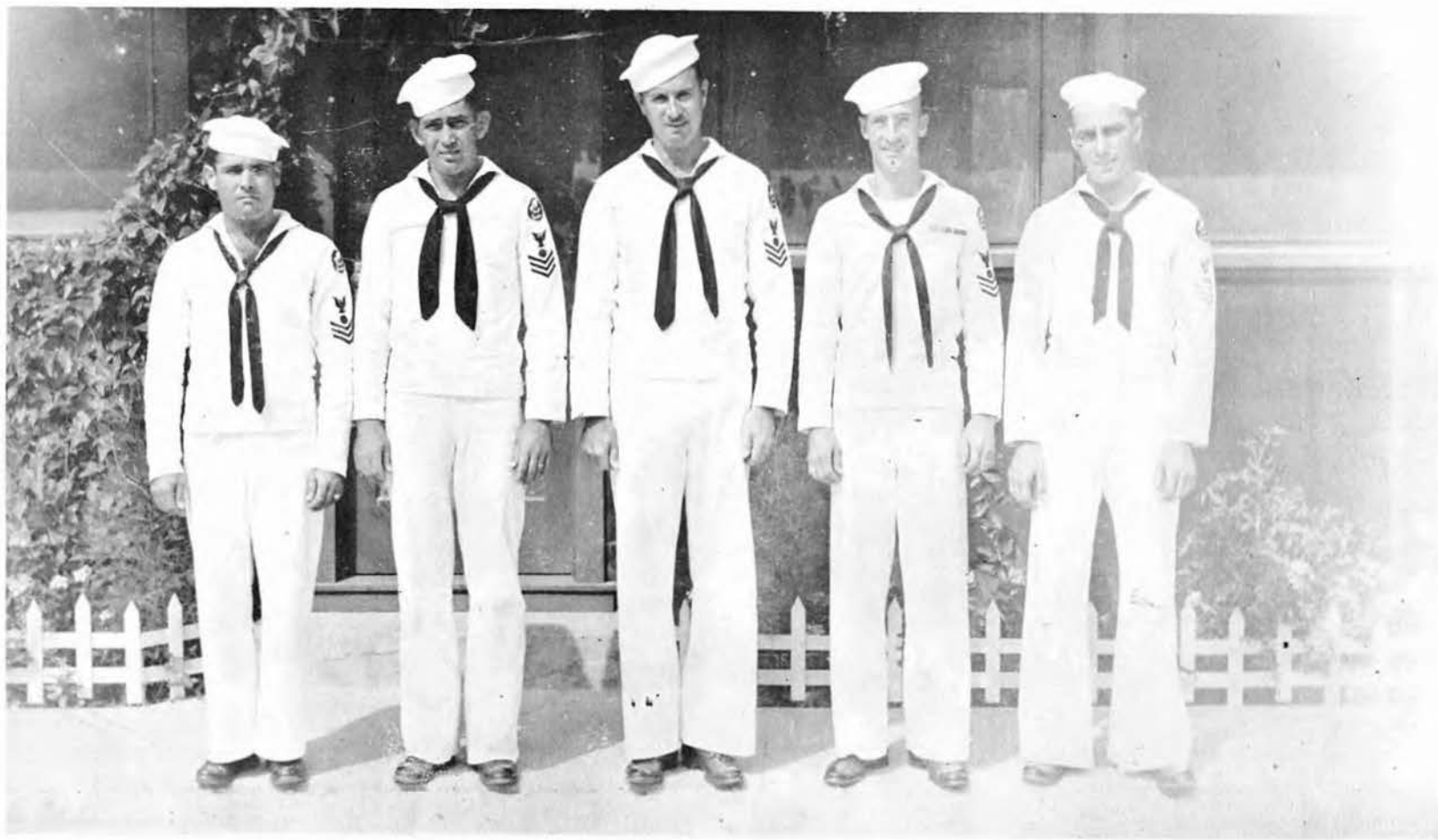
L to R.

*F.G. Winant, F. Cotney, C.H. Boreson, H.T. Williams, R.D. Ginther, R.E. Neugin,
G.H. Fleming, R.E. England, M.R. Jago, G.R. Vaught, L.A. Kramer, J. Snyder.*



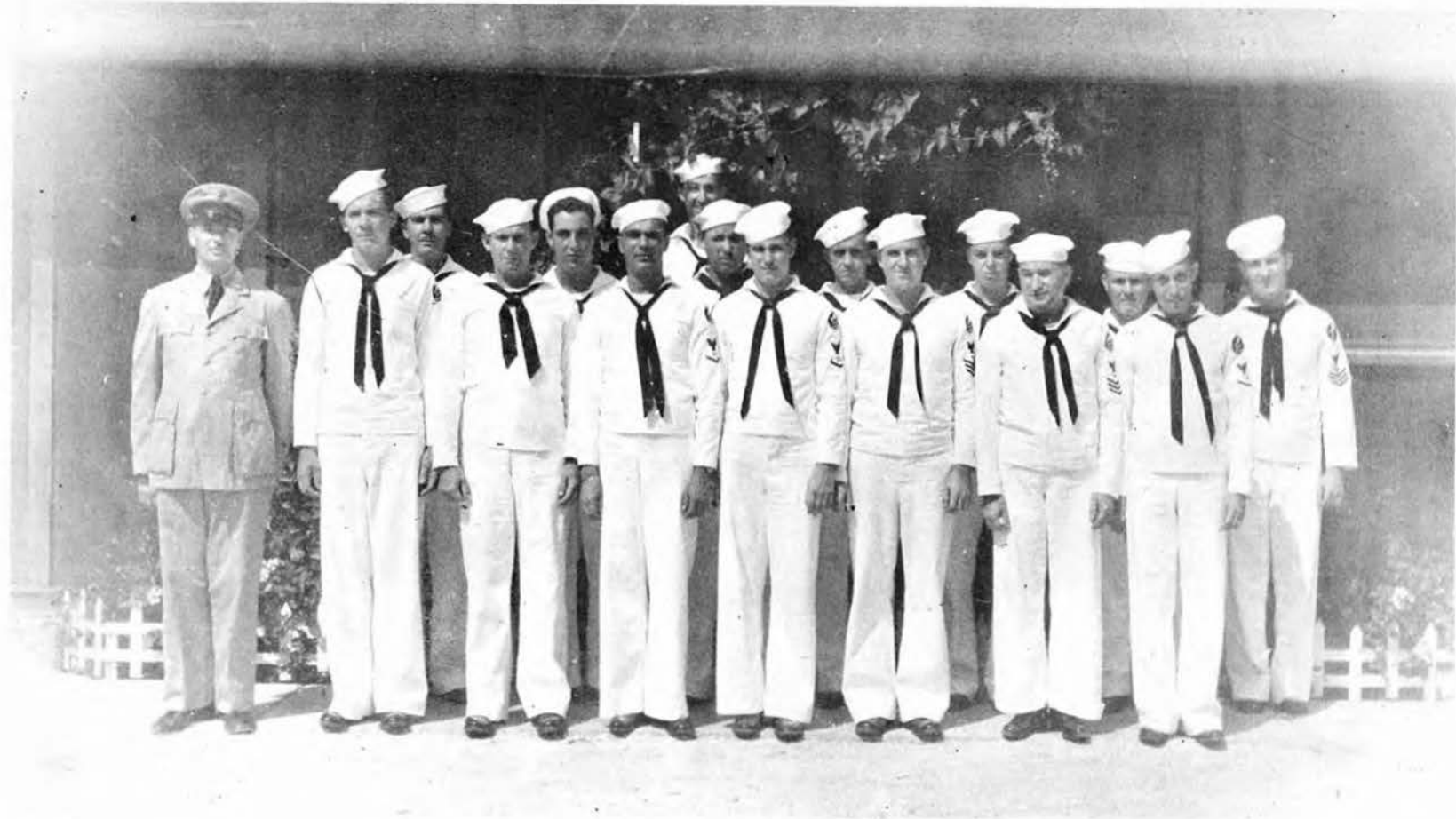
L to R.

*J. Oblinger, G. R. Vaughn, G. H. Robinson, C. E. Hand, O. H. Liebert, E. J. Hutchins,
J. H. Stieve, A. Griffo, J. Fiengold.*



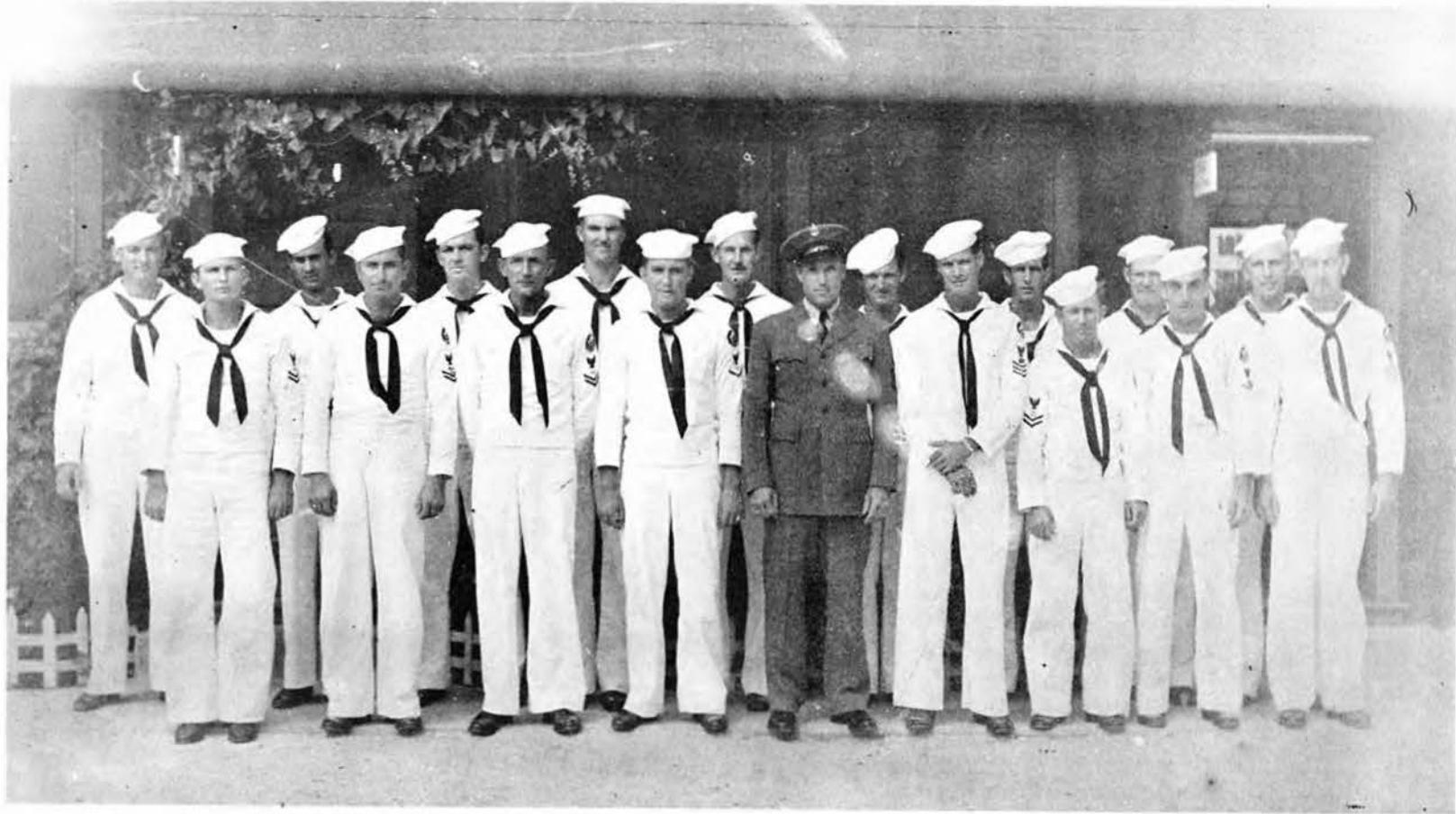
L to R.

W.H. Crowell, L.W. Joyner, E.P. Colgan, D.G. McLain, R.S. Abbett.



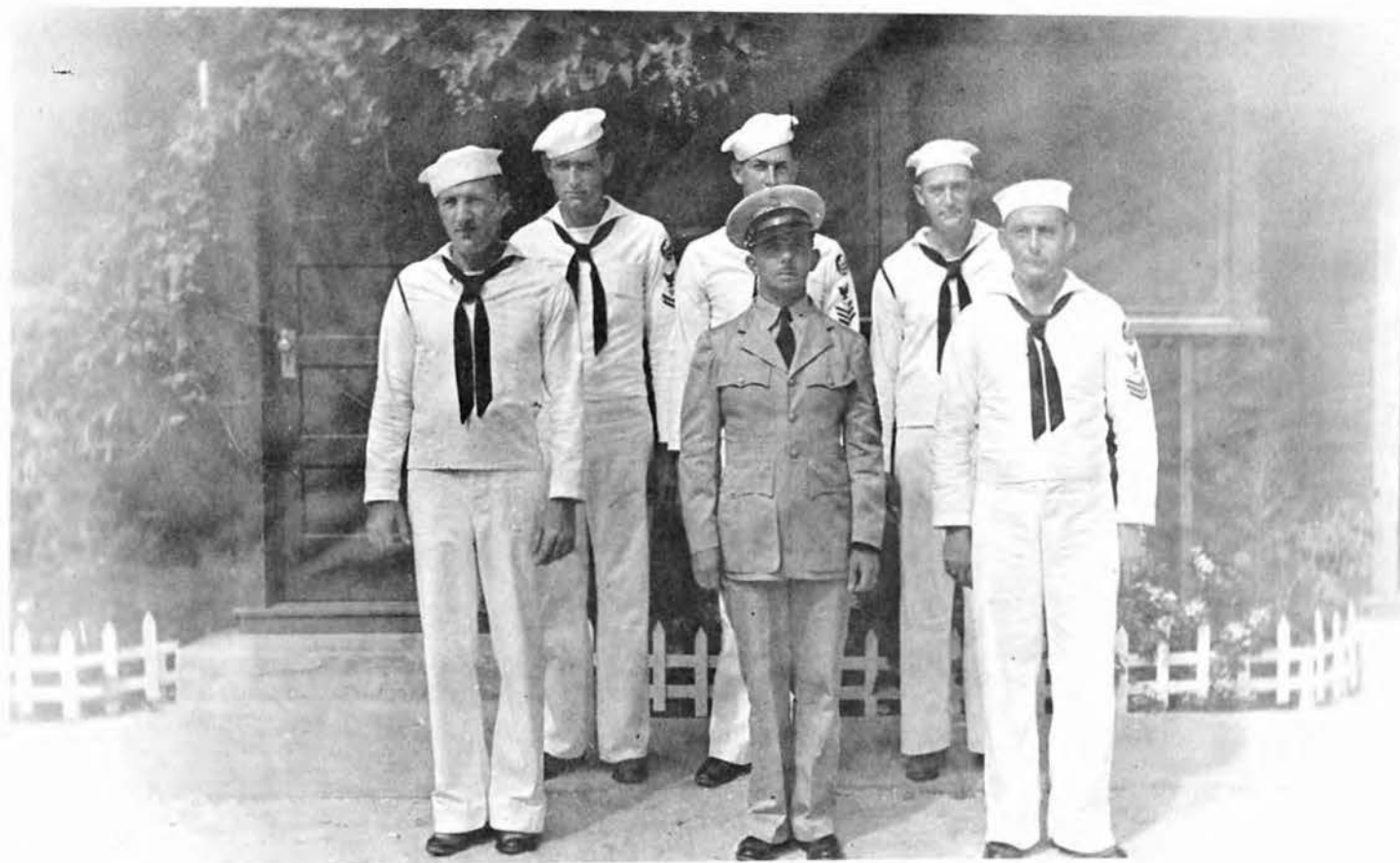
L to R.

*A.C. Smith, G.R. Pruitt, K.G. Nazer, G.H. Sprouse, N. Wagner, E.J. Miskewitz, M. Zivoder
C.W. Wood, D. Floyd, C. C. McPherson, W. H. Wills, C. J. Kiyiap, O. W. Wickman, M.R. Latta,
R. Ziegler, J.B. Sickler.*

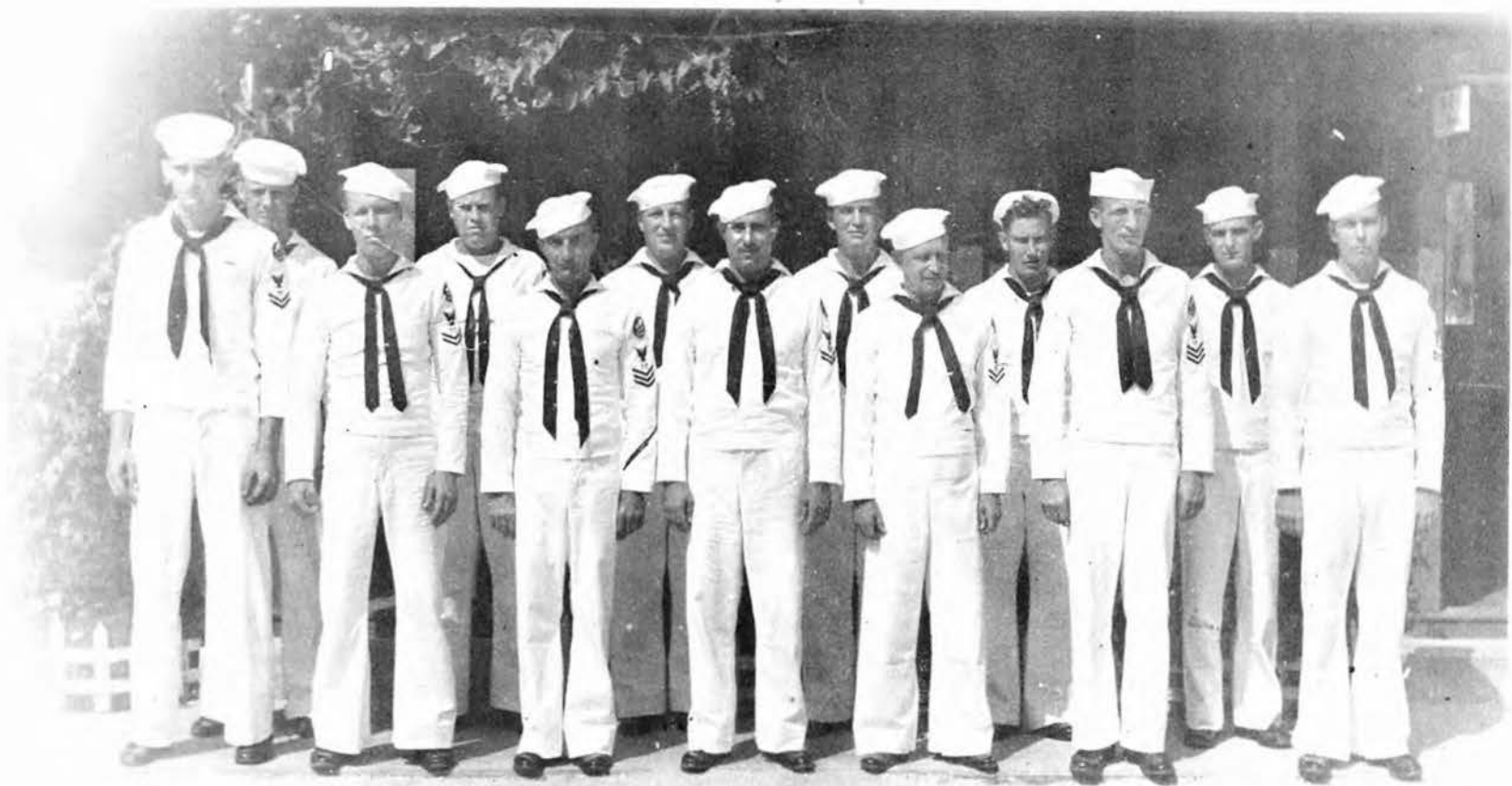


L to R.

S.C. Zawasky, R.C. Phillips, C.P. LaVardera, C. Burgess, E. J. Patterson, W.C. Mankins, R.H. Glover, J. Wilson, C. S. Norman, V.F. Wagner, H.O. Van Meter, F.H. Beddoes, P.J. McBryan, O.E. Roesch, R.J. Nelson, J. J. Vittelo, R. S. Ingraham, W.C. Woodruff.

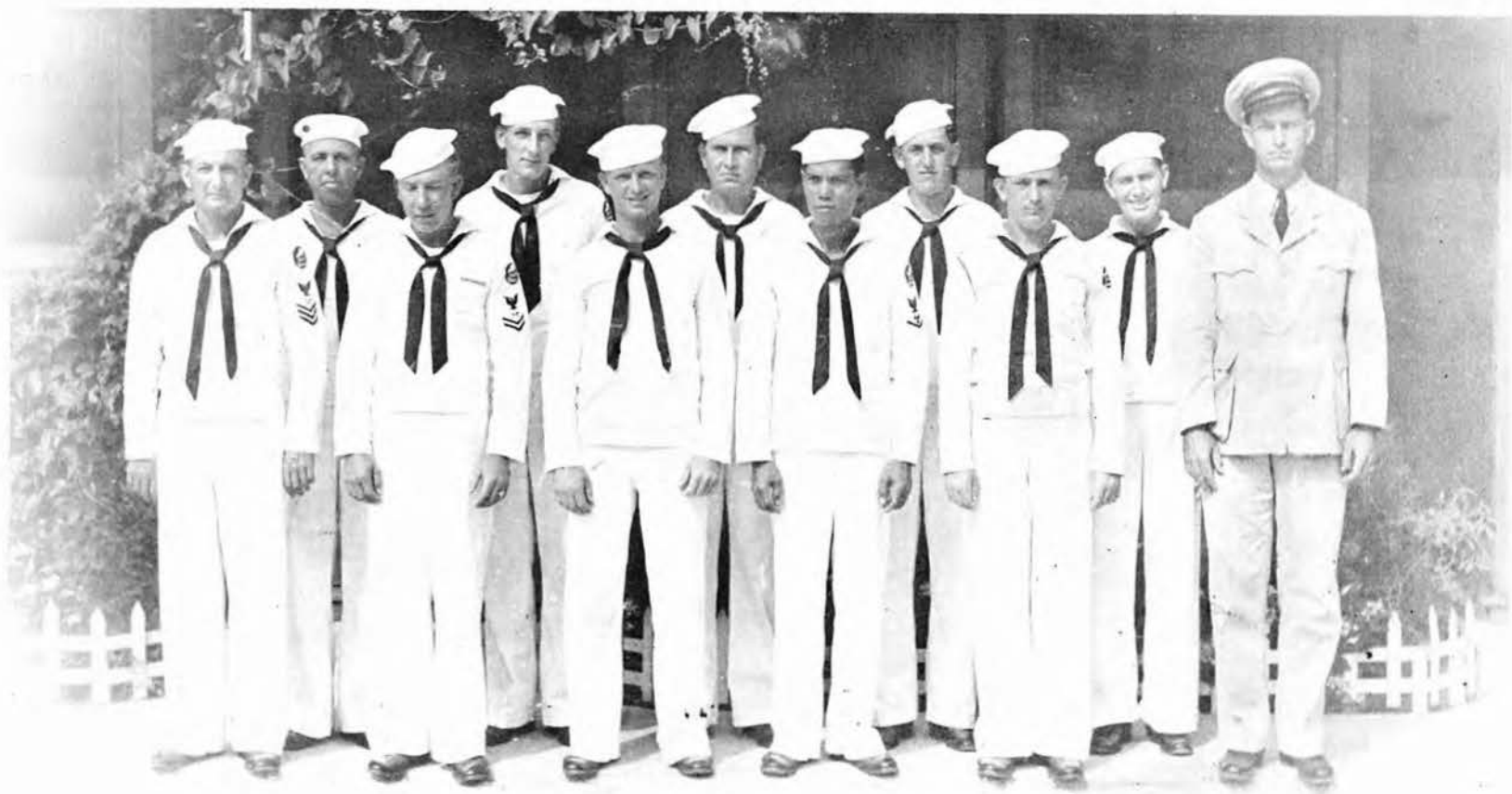


*First row L to R. J.C. Roncoroni, W.L. Cadigan, W.J. Kramer,
Second row L to R. L.A. Grier, G.H. Gibson, C.A. Palmer.*



L to R.

M.C. Brooks, L.C. Powell, E.R. King, J.K. Thompson, W.W. Thomas, C.B. Addie, A.L. Amorella, H.A. Olson, M.S. Alex, W. Gower, O.M. Mason, E.O. Colvin, K.L. Bullivant.



L to R.

*J.E. Richardson, R.L. Miller, J.E. Walton, G. Myer, J.J. Byrne, W.L. Livingstone,
G. Ocfemia, P. Michaluk, A.W. Battles, A.H. Dittmore, P.A. Asenjo.*



Top row L to R. Whitefield, Roberts, Karatkey, Keegan, Townsend, Davis, Collins, Pypiuk, Payne, Jenkins, Mast, Mokwa, Wrenn, Elmore, Smith, Hurd, Cooper, Draughon, Jason, Hurst, Yovich, Crowe,

Middle row L to R. Bartus, Wise, Smith, Springs, Crownover, Lawler, Fowler, Drumheller, Sobeck, Means, Lewis.

Bottom row L to R. Miller, Barfield, Motley, Oliphant, Ewing, Snead, McCrary, Richter, Watchman, James, Szczesni.



*Top row L to R. Warnisher, Miner, Szczybor, Noone, Scott, Polinchak.
Bottom row L to R. Hellgren, Cato, Stewart, Crumly, Barker, Ritchie.*

our job



Our job consisted mainly of construction of Beach and underwater obstacles and erecting them on sections of beach to form training courses for Demolition teams.

These courses were built to assimilate as closely as possible actual beaches which our teams would eventually hit on enemy shores.

Following are scenes of actual construction and also some completed courses.

















"THAR SHE BLOWS"

On the following pages are shown blasting scenes on North Island and results on the Obstacle - Courses.

Each blast tore away Courses which took us many weeks to build, but we built them and Demo blew them.



OBSERVATION TOWER









HITTING
THE
BEACHES!















MR. POWELL &
BAROMETER CREW.



RESULTS OF
HURRICANE!





CLEANING UP CAMP 'FOUR' AFTER
TWISTER STRUCK.

STILL CLEANING UP!



WELFARE & RECREATION



USO BUILDING IN FT. PIERCE

WELFARE & RECREATION

The Welfare & Recreation Hall for C.B. Detachment #1011 was completed and set up on June 1st. 1945. With the aid of Base Welfare and Recreation it was stocked with two pool tables, one ping-pong table and the necessary gear for other recreational purposes.

The first athletic event that C.B. 1011 entered was the double elimination Base Basketball Championship. After three hard fought games, the Seabees were eliminated.

The unit then started a softball league, and in spite of the fact that our work gave the men no time to practice, became the runner up for the Base Championship, against a personnel of roughly 17,000 men, with our unit having only 250 men to choose from. We were defeated in the play-off by the 18th. Army Engineers, a team that had been playing together for over two years. We are not making any excuses for the above statement for our loss but the spirit of the team as shown in the games played made C.B. 1011 well known all over the base.

In the July 4th. Alligator Sweepstakes, our boys won two of the three contests they entered, namely the rubber boat and water melon eating contest, and lost (those fellows are in our hair again) in a tug of war to the 18th. Army Engineers.

We then formed a baseball team and played ten games at Jaycee Field, winning eight and losing two. Both losses were to the Vero Beach Marines. We finally got even with the 18th. Army engineers by trimming them two straight games.

On the 21st. of August, C.B. 1011 held a dance at the American Legion hall in Fort Pierce. A large attendance, including our own C.O. danced to the music of the U.S.N.A.T.B. dance band. Everyone present agreed it was one of the best dances of the year. Free 'Cokes' and hot dogs was just one of the highlights of the evening.

The fighting spirit shown by C.B. 1011 against all competition gained them a reputation as athletes as well as builders.

well done and happy sailing to you all.

Lawrence J. Murray
L.J. Murray, C.W.O.
Welfare & Recreation Officer



SOFTBALL TEAM.



SOUNDS FISHY TO ME!



'PAT CAROL'
UNDER CONSTRUCTION





"FIELD DAY"



RECREATION HALL



THEATRE



FISH FRY

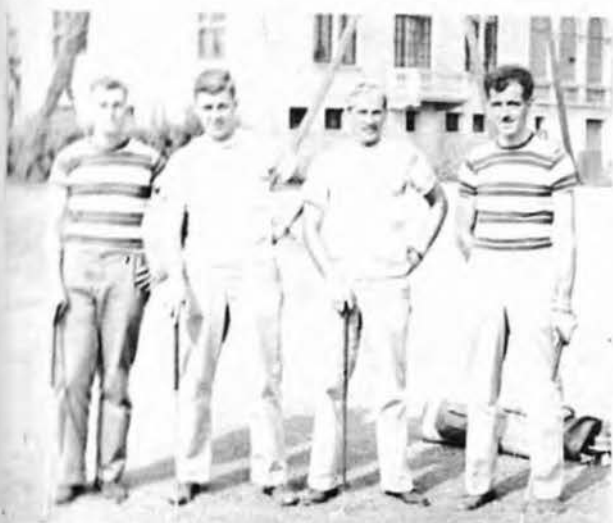


TUMBLERS



WHEELBARROW RACE

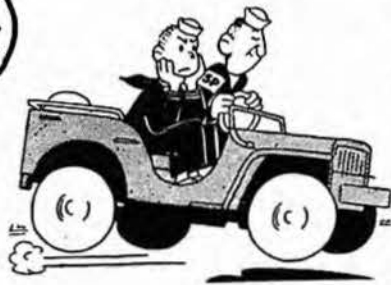




BASE CHAMPIONSHIP PLAY-OFFS



Where you
from
Sailor?



ABBETT, R.S.	CEM		Shelbina, Mo.
ADDIE, C.B.	EM 2/c	517 9th.Ave.	Seattle, Wash.
ADKINS, P.M.	CM 3/c		Salt Rock, W. Va.
ALEX, M.S.	SK 1/c	2325 E. 16th. St.	Brooklyn, N.Y.
AMORELLA, A.L.	SA 2/c	2502 Grand Ave.	Dallas, Texas
ANDERSEN, F.H.	CCM	22W. 70th. Place.	Chicago, Ill.
ANDERSON, E.R.	S 1/c		Grand Forks, N.D.
ANDERSON, J.W.	MM 2/c	Route 9, Box 710	Fresno, Cal.
ANTHONY, J.V.	SC 2/c	2313 Hamilton St.	East Point, Ga.
ARTHUR, L.W.	MM 1/c		Forest, Va.
ASENJO, P.A.	CSF		W.Palm Beach, Fla.
BARFIELD, N.E.	S 1/c		Macon, Ga.
BARKER, H.L.	S 1/c	1015 Desota St.	Pensacola, Fla.
BARKER, K.E.	SC 1/c	Box 131	Clinton, Okla.
BARTUS, W.	S 2/c	RFD #1	W.Brownsville, Pa.
BATSON, C.E.	MM 3/c		McMan, Okla.
BATTLES, A.W.	S 1/c	Route #2	Atella, Ala.
BEGALA, L.	SC 3/c	64 W.Washington St.	Struthers, Ohio.
BEDDOES, F.H.	EM 1/c	2708 Everett Ave.	Raleigh, N.C.
BEDNARSKI, W.M.	S 2/c	RFD	Avella, Pa.
BELLIN, A.	EM 1/c	840 Park Ave.	Baltimore, Md.
BIRMINGHAM, H.M.	CCS		
BOQUETT, L.J.	EM 3/c	6544 Nashville St.	St.Louis, Mo.
BORESEN, C.H.	MM 1/c	74 Warner Ave.	Jersey City, N.J.
BRADSHAW, C.C.	SF 2/c	P.O.Box #35	Campbell, Cal.
BRADSHAW, S.R.	Ptr 1/c		Autryville, N.C.
BROOKS, M.C.	CM 1/c		Snyder, Texas
BROWN, E.J.	SF 3/c	RFD# Box 338	Tampa, Fla.
BROWN, K.O.	S 1/c	1922 SW 17th. Ave.	Miami, Fla.
BROWN, O.L.	CCM		WANETTE Okla.
BRUST, V.D.	MM 1/c	2361 Fauner Ave.	Dayton, Ohio.
BULLIVANT, K.L.	CM 2/c	Westwook	Lassen Co. Cal.
BURGESS, C.	MM 1/c		Wagoner, N.C.
BYLER, C.O.	MoMM 1/c	Box 1133	Littlefield, Texas
BYRNE, J.J.	CM 2/c	1251 S.28th.St.	Phila. Pa.
BYRD, L.F.	CSK		Jacksonville, Fla.
CADIGAN, W.L.	CEM	267 Seneca Ave.	San Fran. Cal.
CALDWELL, R.T.	MM 3/c	405 S.Jax.St.	Aminicus, Ga.
CAMP, W.E.	SF 3/c		Texas City, Texas
CAMPANELLA, L.L.	MM 1/c	105 Helcop Ave.	Providence, R.I.
CAMPLEJOHN, O.H.	MoMM 1/c	213 NW 34th.Terrace,	Miami, Fla.
CATO, H.G.	Bkr 2/c	273 Fraserstse Apt.22	Atlanta Ga.
CHAFFIN, R.E.	EM 2/c	1941 S.Magmolia Ave.	Los Angeles, Cal
CHAPMAN, W.C.	SSMB 3/c		Forney, Texas
CLEAVER, F.D.	CMM	Gen.Del.	Moville, Iowa
CLINCH, F.A.	CM 2/c	15 Bachiller St.	Lynn. Mass.
CLINE, C.G.	MM 1/c	8931 Dorth Ave.	South Gate, Cal.

COLLINS, F.C.	S2/c		marion,	N.C.
COOPER, M.Y.	S2/c	1004 Cotorro Ave.	Coral Gables,	Fla.
COTNEY, F.L.	CM2/c		Bowling Green,	Fla.
CROWE, L.O.	S2/c	RrD# 1	Pickens,	S.C.
CROWELL, W.H.	MM1/c	Oglethore Homes.	Macon,	Ga.
CROWNOVER, C.C.	S2/c	Dunkirk Bldg.	Baltimore,	Md.
CRUM, B.N.	CM2/c	RrD# 1 box 543.	Rudley,	Calif.
CRUMLY, L.C.	SKR1/c	2207 Bristol Ave.	Tampa,	Fla.
DAVIS, J.D.	S2/c	634 Holderness St.	Atlanta,	Ga.
DITTEMORE, A.H.	MM2/c	3305 McKinney Ave.	Dallas	Tex.
DRAUGHON, A.W.	S2/c		Warsaw,	N.C.
DRUMHELLER, J.R.	S2/c	1512 Oakwood Ave.	Richmond,	Va.
DUNCAN, G.O.	S1/c		Jamestown,	Tenn.
ELMORE, G.G.	S2/c	42 mitchell St.	Ashville, N	N.C.
EVANS, I.N.	CM2/c	805n 11th St.	Milwaukee,	Wis.
EWING, R.T.	S2/c	331 Magnolis Terrace,	Essex,	Md.
FARBER, R.	Sr1/c		Los Angles,	Calif.
FEEEMSTER, J.H.	CSK		Jackson,	Miss.
FEINGOLD, J.	Sr3/c	4203 Church Ave.	Brooklyn,	N.Y.
FANNERTY, I.J.	SKD3/c	2716 Cruft Ave.	terre Haute,	Ind.
FLEMING, E.	S1/c		New York,	N.Y.
FLEMING, G.H.	CCM	2009 Penna. Ave.	Chailleston,	W. Va.
FOGLESONG, H.G.	Sr1/c		Williamson,	W. Va.
FOWLER, I.G.	S2/c	28 brooks St.	Lyman,	N.C.
FREDRICK, C.F.	MM1/c	1024 J St.	Hoquiam,	Wash.
GALLAGHER, F.R.	EM1/c		Charleston,	W. Va.
GEORGACOPOULAS, G.	SC1/c	133 boylston St.	Boston,	mass.
GEREGAC, L.F.	S2/c	18622 Northlawn Ave.	Detroit,	Mich.
GIBSON, G.H.	CCM		Cullasaja,	N.C.
GILL A.G.	MM1/c		Leadsville,	N.C.
GINIHER, R.D.	CML/c	25 So. John St.	East Norwalk,	Conn.
GLASS, R.E.	CSK		Tampa,	Fla.
GLOVER, R.H.	CM3/c		Haleyville,	Ala.
GOLDEN, R.F.	CM1/c	139-30 246th St.	Rosedale, L.I.	N.Y.
WITSTEIN, R.A.	MM2/c		Oadland,	Calif.
GROWER, W.	SF2/c	600 Willeamett St.	Newberg,	Oregon.
GROWER I.V.	W1/c	box35	Chapel Hill,	N.C.
GRAVITT J. H.	S1/c	Route #1	Whitney,	Tex.
GRAY, F.G.	SK3/c	406 Russell St.	rayetteville,	N.C.
GREEN, V.O.	CCM	5112 Victory St. Da	Dallas,	Tex.
GREENLEE, J.T.	CM3/c		illmo,	Mo.
GIER, L.A.	Sr2/c	1003 So. Central Ave.	Glendale,	Calif.
GRIFFIN, J.C.	S1/c	310 W. 10th St.	McCook,	neb.
GRIFFIN, J.C.	Ptr.3/c		DeFuniad Springs	Fla.

KLYAIP, C.J.	MM3/c	142 North 9th.St.	Brooklyn,	N.Y.
KNUTSON, O.W.	EM2/c		Milaca,	Minn.
KRAMER, L.A.	CCM	827 Underwood St. W.	Harve de Grace,	Md.
LACROSSE, J.E.	EM1/c	28 Grace St.	Hockland,	Me.
LANDIS, F.F.	MM2/c	2233 154th. St. SW,	Seattle,	Wash.
LATTA, M.R.	CM1/c	415 Gunby St.	Orlando,	Fla.
LOVARDERA, C.P.	CM1/c	1544 Aisquith St.	Baltimore,	Md.
LAWLER, J.H.	S2/c	453 15th. St. N.E.	Washington,	D.C.
LEGGETT, J.C.	SC2/c	211B Monroe St.	Roanoke Rapids,	N.C.
LESLIE, H.A.	SF1/c		Byron,	Wyo.
LEWIS, H.C.	S2/c		Liberty	S.C.
LEWIS, J.H.	SF2/c	504 E. 8th. St.	Pawhuska,	Okla.
LIEPERT, O.H.	CCM	467 Taffee St.	Sunnyvale	Calif.
LINE, J.W.	MM1/c	Box 35,	Hamshire,	Texas
LIVINGSTON, W.L.	SF1/c		W. Palm Beach,	Fla.
LLOYD, D.	SK2/c	1821 Albia Road	Ottumwa,	Iowa
LOISELLE, J.W.	M1/c		Boston,	Mass.
LOVEJOY, A.P.	SKD1/c	32 Sycamore Ave.	Brockton,	Mass.
LOWEWALD, H.R.	SF1/e	400 McKinky Ave.	Hereford,	Texas
LUCAS, F.R.	WT3/c	2033 W. 93rd. St.	Cleveland	Ohio
LUHMAN, J.R.	CM1/c	2419 SE. Jalgate Blvd.	Portland,	Ore.
MACHIN, F.A.	PTR2/c	1310 James St.	Baltimore,	Md.
MACNEIL, R.J.	S2/c	29 Calrin St.	Somerville,	Mass.
MALCOMBE, R. H.	S1/c		Washington	D. C.
MANKINS, W.C.	CM2/e		maysville,	Okla.
MANNION, J.T.	CM2/c	3 Cherry St.	Bethel,	Conn.
MARHULA, R.A.	CM2/c		Roosevelt,	Minn.
MASON, O.M.	CM1/c		Cologne,	Minn.
MAST, R.P.	S2/c	2243 E. magnolia St.	Lakeland,	Fla.
MCBRIEN, P.J.	CM3/c	Rd #1	Brookfield,	N. H.
MATTOX, D.M. Jr.	EM2/c	Box 152	Victoria,	Va.
MATTSON, R.B.	MM1/c	910 Conn. St.	Paulsboro,	N. J.
MAUCH, A.L.	EM2/c	3819 N. 60th. st.	Los Angeles,	Calif.
MALPINE, G.W.	CM1/c		Luine,	Wash.
MCCRARY, C.J.	S2/c	Route # 4	Sylvester,	Ga.
MCCEARY, J.W.	PTR3/c	145 NW. 59th. Pl.	Los Angeles,	Calif.
MCCURRY, F.W.	CM2/c	route # 1 Box 75	Yamhill,	Ore.
MCEARTER, H.V.	CM1/c	406 Church St.	macon,	Ga.
MCFARLAND, R.J.	CM1/c		Sacramento,	Calif.
MCKENNA, H.W.	CM1/c		Vernal,	Utah.
MCLAIN, R.F.	SC2/c	97 N. Union St.	Concord,	N. C.
MCNEIL, H.A.	CM1/c	512 N. Cookacr@ St.	Campton,	Calif.
MCPHERSON, C.C.	S2/c	1209 Stillman Ave.	Gadsden,	Ala.
MEALS, A.	MM1/c	Miller Hotel	Cut Bank,	Mont.
MEANS, R.C.	S2/c	1402 SE. 9th Court,	Hialeah,	Fla.

MERRITT, R.N.	S2/c	1542 Pearl St.	Jacksonville, Fla.
MEYER, G.	CM2/c	700 Lafayette Ave.	Hawthorne, N.J.
MEYERS, K.H.	BKR2/c		Ponchatoula, La.
NICHALUK, P.	SK3/c	49 Hamlet St.	Fall River, Mass.
MILAN, S.	MM1/c		miami, Fla.
MILLARD, M.H.	SF2/c	594 Martina Dr.N.E.	Atlanta, Ga.
MILLER, A.J.	CM3/c	721 7th. St. S.E.	Washington D.C.
MILLER, E.G.	SF2/c	324 51st. Street	Oakland, Calif.
MILLER, R.L.	CM1/c	Route# 1 Box 136	Fowler, Calif.
MILLER, T.S.	S2/c	Route # 4	Spartanburg, S.C.
MINER, L.T.	CM2/c	1122 Luzerne St.	Scranton, Pa.
MINSHALL, C.A.	CM2/c		San Diego, Calif.
MISKEWITZ, E.J.	CM3/c	671 Darrs Ave. N. W.	Grand Rapids, Mich.
MOKWA, C.J.	S2/c	234 E. Cherryhill St.	Pittsburg, Pa.
MORAN, J.F.	SF3/c		Chicago, Ill.
MORETZ, R.A.	MM1/c	177 6th. Ave.	Hickory, N.C.
MORGAN, R.F.	CM3/c		St. Louis, Mo.
MORMAN, W.E.	CM3/c		Duluth, Minn.
MORRISON, W.N.	S2/c		Norwood, Pa.
MOTELY, H.W.	S2/c	Route # 3	Danville, Va.
MUMMAN, H.C.	PTR2/c		mifflintown, Pa.
MURPHY, C.H.	WR1/c	20053 Greenwood St.	Ft. Smith, Ark.
MURRAY, S.J.	MM1/c	52 1/2 15th. St.	Weeling, W. Va.
MURRO, L. JR.	MM3/c	23 Steam Boat St.	Trenton, N. J.
NACHMAN, L.G.	CM1/c	Box 216	Hertford, N.C.
NASER, K.G.	CM1/c	301 S. New Hampshire,	Los Angeles, Calif.
NELSEN, R.J.	CM2/c		Stickney, S.D.
NEUGIN, R.E.	WR1/c		Borgir, Texas
NETTON, K.W.	COX	231 New Litchfield St.	Torrington, Conn.
NICHOLS, D.W.	EM3/c	614 E. Pike St.	Crawfordsville, Ind.
NICHOLS, E.E.	CM2/c	311 Main St.	Worcester, Mass.
NOONE, E.C.	SC3/c	314 S. 13th St.	Ft. Pierce, Fla.
NORMAN, C.S.	MM2/c	1554 Lauendale,	Detroit, Mich.
NORTHROP, E.W.	PTR2/c	308 Columbus Ave.	New Haven, Conn.
OBLINGER, J.N.	MM1/c	241 5th. Ave.	Charleston, S.C.
OCFIMIA, G.N.	MM2/c	2354 32nd. St.	Astoria, N.Y.
OHRNBERGER, C.H.	CM2/c	3215 Harrisburg Blvd.	Huston, Texas
OLIPHANT, J.E.	S2/c	ROUTE # 1	Kannapolis, N.C.
OLSEN, E.A.	MM1/c	Folly Cove	Glouster, Mass.
OLSON, H.A.	CSr	1518 E. Heroy St.	Spokane, Wash.
OSBORNE, C.B.	PHM3/c		Bridgeport, Conn.
OTTO, W.J.	SL/c		South Bend, Ind.
PACE, F.W.	EM1/c	330 Basswood St.	Jacksonville, Fla.
PADGETT, R.D.	MM2/c		Avon Park, Fla.
PALMER, C.A.	MM3/c	West End Ave.	Somerville, N.J.
PALMISANO, E.J.	SL/c	2546 A Benton St.	St. Louis, Mo.

PARKER, F.E.	CM2/c	9518 Kalmia St.	Los Angeles,	Calif.
PARSONS, C.R.	SF1/c		Westbourne,	Tenn.
PASS, I.	SF3/c	1474 Lincoln Pl.	Brooklyn,	N.Y.
PATTERSON, E.J.	SF2/c	53 Linden Pl.	Med Bank,	N.J.
PATZSCHKE, C.F.	CM2/c	3503 Ailaa Ave.	Baltimore,	Md.
PAYNE, W.D.	S2/c	713 W. Kentucky Ave.	Tampa,	Fla.
PERSHICK, J.J.	CCM	298 Busbank Ave.	New Dorp, S.I.	N.Y.
PETERS, J.N.	MM1/c	623 N. Millege St.	Athehs,	Ga.
PETERSEN, H.R.	CM2/c	152 E. 6th. St.	Livermore,	Calif.
PETERSON, L.E.A.	MM2/c	204 N.W. 22nd. Place.	Portland,	Ore.
PETERSON, L.J.	GM1/c	Box 798	Gile,	Wis.
PICKARD, J.A.	EM1/c	Routg # 1	Lunwoody,	Ga.
PODPORA, W.A.	S1/c		Detroit,	Mich.
PHILLIPS, R.C.	CM2/c		wanchula,	Fla.
POIRIER, E.R.	CM2/c		Boston,	Mass.
POLINCHAK, W.	BM2/c	3118 W. Second St.	Chester,	Pa.
POORE, R.D.	CM2/c		Williamston,	S.C.
POWELL, L.C.	PIR27c	1409 W. Stetson Ave.	Orlando,	Fla.
POWELL, E.B.B.	SF1/c		Red Rock	Okla.
PRICHARD, E.F.	CM1/c		Ft. Oglethorpe,	Ga.
PROCK, E.L.	CCM		Craig,	Cola.
FRUITT, G.R.	fl/c		Miami,	Fla.
PYPIUK, S.	S2/c	380 Harrison St.	Passaic,	N.J.
QUACKENBUSH, J.E.	SF2/c		Harnell,	N.Y.
RAEF, J.C.	M1/c	1104 E.9th.	Mincie,	Ind.
RAMBACH, W.E.	WT3/c		Jacksonville,	Fla.
REEVES, A.	CM2/c		Louisville,	Ky.
REGAN, F.W.	MM2/c	2961 Saturn St.	Huntington Park,	Calif.
REGUCCI, P.L.	CM2/c	Lake Road	Congers,	N.Y.
RICHARDSON, J.E.	SF1/c		W. Palm Beach,	Fla.
RICHTER, R.M.	S2/c	1725 Minn. Ave. S.E.	Washington	D.C.
RITCHEE, A.A.	MMR1/c	15 Hyde St.	Annapolis,	Md.
RIVERS, T.A.	S1/c	1017 W. Third St.	Sanford,	Fla.
RIZZO, C.A.	CM1/c	102-09 Foster Ave.	Brooklyn,	N.Y.
ROBERTS, J.W.	BM2/c		Democrat,	N.C.
ROBERTS, W.F.	S2/c	1335 Pentweed Rd.	Baltimore,	Md.
ROBINSON, G.H.	S1/c		Homer,	La.
ROESCH, O.E.	BM2/c	3800 1st. Ave. North St.	St. Pete.	Fla.
ROGERS, C.L.	S1/c		M. Allis,	Wis.
ROLLINS, J.B.	CM2/c		Depew,	Okla.
RONCORONI, J.C.	S2/c		Altoona,	Pa.
ROPER, M.W.	MM2/c	2015 Stucky Ave.	Louisville,	Ky.
ROSANO, F.	COX	26 Askren St.	Uniontown,	Pa.
ROUSSEAU, R.F.	BM1/c	1207 Elm St.	Manchester,	N.H.
RUCKERT, R.J.	CM2/c	103 Second St.	Oakland,	Md.
SADRAKULA, L.R.	MMS2/c	96 Marker St.	Passiac,	N.J.
SANTORO, E.	BM2/c	123 Bradford Ave.	Mamaroneck,	N.Y.
SAVAGE, J.C.	CM2/c	570 Preston Ave.	Houston,	Texas
SCHNEIDER, G.L.	CM2/c	4312 Arizona Ave.	Baltimore,	Md.
SCOTT, J.L.	SC2/c		Pell City	Ala.
SCHWARTZ, J.	CM2/c	1095 Prospect Pl.	Brooklyn,	Mass.
SCOTT, M.P.	SF1/c	% Mrs. T.A. Brazell	Kingsland,	Ga.

SHERWIN, D.M.	MM3/c	2017 W. Davison St.	Detroit,	Mich.
SMITH, A.C.	CSF	1620 Humboldt St.	Santa Rosa,	Calif.
SHINN, W.C.	SF3/c	Route # 1	Fargo,	N.D.
SHOVE, D.E.	MM2/c	115-38-120th. St.	Ozone Park,	L.I.N.Y.
SICKLER, J.B.	WT1/c	62 Fair Haven Rd.	Fair Haven,	N.J.
SMITH, G.L.	S2/c		newry,	S.C.
SMITH, S.G.	S2/c	503 Main St.	mayersdale,	Pa.
SMITH, D.E.	MM3/c		Los Angeles,	Calif.
SMITH, R.R.	SK2/c		Salt Lake City,	Utah
SMOLIK, F.J.	CML/c		Max,	Minn.
SNEAD, J.S.	S2/c	2014-C Idlewood Ave.	Richmond,	Va.
SNYDER, J.	MM2/c	65 Alferd St.	Biddeford,	Maine
SOBECK, J.W.	S2/c	486 3rd. St.	Kopple,	Pa.
SPRINGS, C.E. JR.	S2/c	Route # 1	Loris,	S.C.
SPROUSE, G.H.	SF2/c	643 Gillitte St. SW.	Atlanta,	Ga.
STEPHENSON, W.R.	CCS	Box 287	Winter Haven,	Fla.
STEWART, W.J.	SC3/c	228 Stephen St.	belleville,	n.J.
STIEVE, J.H.	SF3/c	122 Washington Ave.	Watertown,	N.Y.
STONE, R.L.	FL/c	185 Elm St.	new Rochelle,	N.Y.
STOTTS, P.	S2/c		Paoli,	Ind.
SUKURSKI, J.A.	CCS		marshfield,	Ore.
SUMROW, W.E.	BKR3/c	707 N. Main St.	Altas,	Olka.
SZCZESNIAK, R.J.	SK3/c	6044 Maxwell Ave.	Detroit,	Mich.
SZCZBOR, M.H.	S2/c	2430 Fleet St.	Baltimore,	Md.
TAPPAN, R.C.	CCM		Marianna,	Fla.
TELG, O.E.	CML/c		chiusman,	Texas
THOMAS, W.W.	PTR1/c	559 Morena Court	Warrington,	Fla.
THOMPSON, J.K.	PTR2/c	921 S. 6th. St.	Tucson,	Ariz.
THRASH, R.T.	SF2/c		Kilgore,	Texas
TRINIDAD, L.G.	CM2/c	1147 Benton St.	Santa Clara,	Calif.
TOWNSEND, M.K.	S2/c		Drakes Branch,	Va.
UTZ, C.J.	SC2/c	738 E. High St.	Alliance,	Ohio
VALLONE, R.T.	SK2/c	4428 Jefferson St.	Houston,	Texas
VAN METRE, K.G.	CM3/c	429 Porter Ave.	Martinsburg,	W. Va.
VAUGHT, G.R.	M1/c	125 S. Kanswka St.	Buckannon,	W. Va.
VAUGHN, W.C.	MM3/c		Rainelle,	W. Va.
VITELLO, J.J.	WT3/c	28 Mayer St.	Roslindale,	Mass.
WALLACE, J.B.	MM3/c		mountain City,	Tenn.
WAGNER, V.F.	CCM	116 Burliegh Ave.	norfolk,	Va.
WAGNER, N.	MMS2/c	7316 19th. Ave.	Brooklyn,	N.Y.
WALKER, L.	CM2/c	Box 1654	el Paso,	Texas
WALTON, J.E.	CM2/c	69th St.	Charleston,	W. Va.
WARISHER, M.J. Jr.	SC3/c	208 Willard Ave.	Lincoln,	Ill.
WATCHMEN, W.W.	S2/c	5665 Kavon Ave.	Baltimore,	Md.
WATT, W.	SC2/c		vancouver,	wash.
WATTERS, J.E.	SF2/c	1722 2-4 Redcliff St.	Los Angeles,	Calif.
WATTERS, J.R.	CML/c	RFD #2, Box	Bessemer,	Ala.
WEHREN, J.W.	CM2/c	457 W. Rosecrans Ave.	Clearwater,	Calif.

WESTFALL, C.B.	F1/c		Viriden,	Ill.
WHEELER, L.	M2/c		Sumter,	S.c.
WHITE, F.X.	CM2/c	1304 9th. Ave.	Belle Plaine,	Iowa
WHITFIELD, H.W.	S2/c		Ferry,	Fla.
WICKMAN, O.W.	Y1/c		Boulder,	Colo.
WILHELMY, W.J.	BKR2/c		New York City	N.Y.
WILLIAMS, C.R.	S2/c	4616 Hawthorne St.	Philadelphia,	Pa.
WILLIAMS, G.C.	SF1/c		Jacksonville,	Fla.
WILLIAMS, H.T.	MMS2/c	414 Clayton St.	Montgomery,	Ala.
WILLIAMS, J.D.	S1/c		Tampa,	Fla.
WILLIAMS, W.W.	MM1/c		Albany,	N.Y.
WILLS, W.H.	CM1/c	1320 Richmond St.	Brunswick,	Ge.
WILSON, D.E.	CM2/c		LOS Angeles,	Calif.
WILSON, R.O.	CM3/c		Beckwith,	W. Va.
WILSON, W.O. Jr.	CCM		Dallas,	Texas
WILSON, J.	Sr3/c	2028 Howard St.	Philadelphia,	Pa.
WINANT, F.G.	CM1/c		Raymond,	Maine
WINGER, R.G.	S2/c		Columbia,	S.C.
WISE, R.M.	S2/c	413 N. College St.	Carlisle,	Pa.
WOOD, C.W.	S1/c		Fort Worth,	Texas
WOOLBRIGHT, O.E.	MM1/c		Seminole,	Fla.
WOODRUFF, W.C.	MM1/c	423 E. Genega St.	Elkhorn,	Wis.
WRENN, R.I.	S2/c		Aurora,	N.C.
WYATT, C.L.	MM1/c	444 McKilkas Dr.	Los Angeles,	Calif.
YOUNG, R.H.	MM1/c			Ill.
YOVICH, G.	S2/c	RFD# 2	Union City	Pa.
ZAWASKY, S.C.	CM1/c	266 Fuld St.	Brockton,	Mass.
ZIEGLER, R.	S2/c	225 Parkside Ave.	Brooklyn,	N.Y.
ZIVODER, M.	CM1/c	9810 Heath Ave.	Cleveland,	Ohio

OUR OFFICERS

BAFFES, Peter L., Lt.(jg) CEC, USNR	2618 N. Francisco St. Chicago, Ill.
BELL, Arnold E., Corp., CEC, USNR	708 S. Grand St., Lansing, Mich.
MURRAY, Lawrence J., Ch. Corp., CEC, USNR	1995 Creston Ave., New York, N. Y.
POWELL, Elwyn N., Lieut. Comdr., CEC, USNR	Ft. Lauderdale, Fla.
SCHNURR, Francis M., Lt.(jg) CEC, USNR	603 W. Washington St., Sandusky, Ohio



PIN-UP SECTION









